

# TECHNICAL RIDER

## MAIN STAGE

<b>GENERAL</b>	<b>2</b>
<b>HOSPITALITY</b>	<b>3</b>
<b>MERCH STAND</b>	<b>4</b>
<b>SECURITY</b>	<b>4</b>
<b>PHOTO POLICY</b>	<b>4</b>
<b>TECHNICAL SPECIFICITIES – SOUND</b>	<b>5 - 6</b>
<b>TECHNICAL SPECIFICITIES – LIGHT &amp; VIDEO</b>	<b>7 - 8</b>
<b>WHAT TO DO IN FRIBOURG &amp; AROUND</b>	<b>9</b>
<b>LOUD &amp; PROUD SINCE 1983</b>	<b>10</b>
<b>ANNEXES</b>	<b>11 - 13</b>

## GENERAL

### 1. Address and contacts

<b>Address</b>	FRI-SON Route de la Fonderie 13 1700 Fribourg Switzerland	
<b>Phone</b>	0041 (0)26 424 36 25	
<b>Website</b>	www.fri-son.ch/fr	
<b>Booking</b>	Martina Kull	programmation@fri-son.ch
<b>Production</b>	Mélanie Meystre	prod@fri-son.ch
<b>Light</b>	Logan Duc	light@fri-son.ch
<b>Sound</b>	Jean Peiry	sound@fri-son.ch

<b>2. Capacity</b>	1200 standing	300 seated ↳ See picture in annex.
--------------------	---------------	---------------------------------------

<b>3. Stage dimensions</b>	Depth	7.50 m
	Width	12.50 m
	Opening	8.00 m
	Height	1.20 m
	Clearance	4 m

<b>4. GPS</b>	46,79505° N, 7,15153° E
---------------	-------------------------

<b>5. Parking</b>	<b>Dimensions</b>	15.7 (16 m fits if overtaking the sidewalk) x 5.48 m ↳ See plan and picture in annex.
	<b>Electricity</b>	2x 16A / 1x 32A
	<b>Door for load-in</b>	H 2.18 x W 2.32 m Direct and flat access to the stage

### 6. Night / truck driving permit

In Switzerland, between 22:00 and 05:00 or on bank holiday, a permit is required if you are driving a truck with a permissible total weight of over 5 t or trailer with a permissible total weight of over 3.5 t. If you are circulating under those conditions to Fri-Son from your previous destination, please let us know if we must emit a permit for you.

# HOSPITALITY

## Dressing Rooms

We have 2 Dressing Rooms, each with :

- bathroom and shower
- sofas
- a table and chair
- hangers
- a mirror
- a fridge

↳ See pictures in annex.

Drinks will be available in the fridges of the Dressing Rooms.

## Green Room / Kitchen

Our Green Room / Kitchen has :

- 18 seats
- a coffee machine
- a kettle with a selection of teas
- a beer tap
- a fridge
- cutlery

↳ See pictures in annex.

Snacks, coffee and beer will be available in the Green Room.

## Production Office

Please let us know if a Production Office is needed. We can furnish a room for you.

↳ See pictures in annex.

## Artist's Catering

A self-service buffet will be available in the Green Room.

We are committed to sustainability and mindfulness of the food industry's impact on the environment. Based on our experience, we often end up with significant leftovers when we fulfill all the catering requests. To minimize this, we carefully adjust the catering lists, ensuring they reflect the right quantities and prioritize the most local products available. This will be discussed during advancing. For ethical reasons, we no longer purchase certain brands and prioritize vegetarian meals, opting instead for more local and sustainable alternatives. If any of the proposed alternatives are problematic, please raise your concern during the advance discussion.

Dinner is typically served in-house, in the Green Room. Our in-house kitchen team will be happy to prepare and serve a complete, vegetarian, home-cooked meal. If you require meat options or a buy-out, please inform us during the advance process.

## Laundry

A washing machine and dryer are available for use, without charge. Iron and ironing board are also provided.

## Hotels

Upon agreement.

## Runner

Upon agreement.

## Water and bottles

We provide water bottles for stage, but to reduce waste, you are welcome to bring your reusable bottle, which you can refill with quality tap water. We do not provide small PET bottles for tour buses, but you are welcome to fill your gallon or own reusable bottles from our tap.

## WiFi

Available in the whole building. Login details will be given on show day.

## MERCH STAND

Location of the merch stand has to be discussed during the advancing. Be aware that the size of the tables might influence the final capacity, for security reasons. We provide tables, hangers, lights and power.

↳ See map of the usual locations of merch stands in annex.

## SECURITY

### General

The safety of our public, artists and staff is a main concern to us. Nonetheless we are willing to discuss any reasonable special request that would require enhanced security presence. Please announce any safety concern as soon as possible during the advancing to our production manager.

Note that we may not be able to consider special requests implying safety and security considerations on short notice.

### Smoking areas

It is forbidden to smoke in every room accessible to the public, nor on stage, from doors opening to closing. Smoking in the Dressing Rooms and Green Room is to be discussed with production manager on show day.

### Crash barrier

According to our risk analysis (mainly determined by foreseeable capacity) we may impose on the show :

- crash barriers in front of the main stage
- barriers around dj booth if not on stage
- barriers around FOH

The barricades are meant to provide access to the front rows for our caring crew and / or to protect technical equipment.

### Age admission

People under the age of 16 must be accompanied by a legal representative.

### Staff

We have our own security - caring crew. The team is trained for the specific needs of our venue and works mainly in a caring ethic.

### Control

Frisking or body search of the audience at the entrance and controlling of backstage access is provided according to our risk analysis or on your request. Note that we do not provide escorts nor body guards.

### Awareness concept

We subscribe to the [Aretha Charter](#), a prevention tool put in place to combat all kinds of discriminatory behavior. We do not tolerate any discrimination based on gender identity, sexual orientation, physical appearance, disability, skin color, ethnicity, religious affiliation, social background. We expect respect from every person in the venue, as much from the audience than from the artists and their team, and we reserve the right to take action in the event of inappropriate behavior. If you experience or observe any crossing of personal boundaries you can address to our staff for support.

## PHOTO POLICY

We usually have one or two in-house photographers, as well as a video-maker covering the concerts. Please make sure to communicate any photo policy we should be aware of during the advancing.



# TECHNICAL SPECIFICITIES

↪ See pictures of the stage and room in annex.

## SOUND

**PLEASE NOTE THAT ACCORDING TO A STRICT SWISS LAW RESTRICTING THE LOUDNESS, NO BAND SHALL EXCEED LEQ60 100 DB(A) AND THE TOPS NEVER EXCEED THE LIMIT OF 125 DB(A) AT ANY TIME.**

### PA

---

**SPEAKERS**            12 x Adamson Y10  
                              2 x Adamson SpekTrix Wave downfill  
                              8 x Adamson SpekTrix subwoofers  
                              2 x Adamson E219 subwoofers

**AMPLIFIERS**        5 x Lab Gruppen PLM10000Q  
                              1x Lab Gruppen PLM+ 20K44

### FOH

---

**DESK**                1 x DIGICO SD8  
                              1 x MADi RACK (48 inputs / 8 analog outputs / 8 AES/EBU outputs)

**PROCESSING**       Lake Controller

**RECORDING**        1x DIGICO UB-MADI (32in/out)

**INTERCOM &  
SHOUTBOX**        1 x Line to monitor desk  
                              2 x Behringer Eurolive B205D

### MONITORING

---

**DESK**                1 x DIGICO SD8  
                              1 x MADi RACK (48 inputs / 16 analog outputs / 8 AES/EBU outputs)

**MONITORS**        12 x L'Acoustics X15  
                              12 x Aux sends  
                              2 x Sidefills Turbosound TMS3 + Subs TSE218  
                              1 x Sub L' Acoustics KS21

**AMPLIFIERS**        6 x L'Acoustics LA12X ( !! Maximum 12 separate line including Drum Fill !! )

# TECHNICAL SPECIFICITIES

## SOUND

### MICROPHONES & DI BOX

#### MICS

1 x Shure beta 52	5 x Sennheiser e604
1 x Shure beta 91A	2 x Sennheiser BF504
1 x Shure beta 91	4 x Sennheiser e609
7 x Shure SM 57	2 x Sennheiser MD 421
7 x Shure SM 58	2 x Sennheiser e614
4 x Shure beta 57A	1 x Audix D6
2 x Shure beta 58	1 x Audix i5
2 x Shure SM58-S	2 x Audix ADX-51
2 x Shure KSM 27	1 x Electro Voice n/d 868
4 x Neumann KM184	x Electro Voice n/d 308b
1 x Beyerdynamic M88TG	

#### DI

12 x DI BSS AR 133
2 x DI BSS AR 116
1 x DI Radial proAV2

### DJ EQUIPMENT

4 x Pioneer CDJ3000
4 x Pioneer CDJ2000 NXS
2 x Pioneer PLX1000
4 x Technics MK5
1 x Pioneer DJM A9
1 x Pioneer DJM900 NXS
1 x Pioneer DJM800
1x Allen&Heath Z14

### HF FREQUENCIES

470 to 694 MHz - 823 to 832 MHz - 863 to 865 MHz

### POWER SUPPLY

1 x 125A (CEE)
1 x 63 A (CEE)
1 x 32 A (CEE)
6 x 16 A (CEE)

# TECHNICAL SPECIFICITIES

## LIGHT & VIDEO

### DESK

1 x MA GrandMA3 Light

### DIMMERS

3 x MA Lighting Digital Dimmer 12 x 2.3kW

### PARS

5 x Lighting bar (6 PAR 64 1000W)

4 x PAR 64 solo 1000W

2 x ACL Series 250W

8 x PAR LED Showtec 18 tri MK II 6ch (house light)

### MOVING LIGHT

8 x Robe 600 Led Wash – 4 x floor, movable

6 x Clay Parky Sharpy – 4 x floor, movable

8 x Axcor spot 300

### HAZER

2 x Tour Hazer 2

### VIDEO

1 x Beamer Digital Projection - Laser - Résolution FullHD 1920 x 1200 - Lum. 6500

1 x Screen 16:9, 658 x 370cm

### LASER

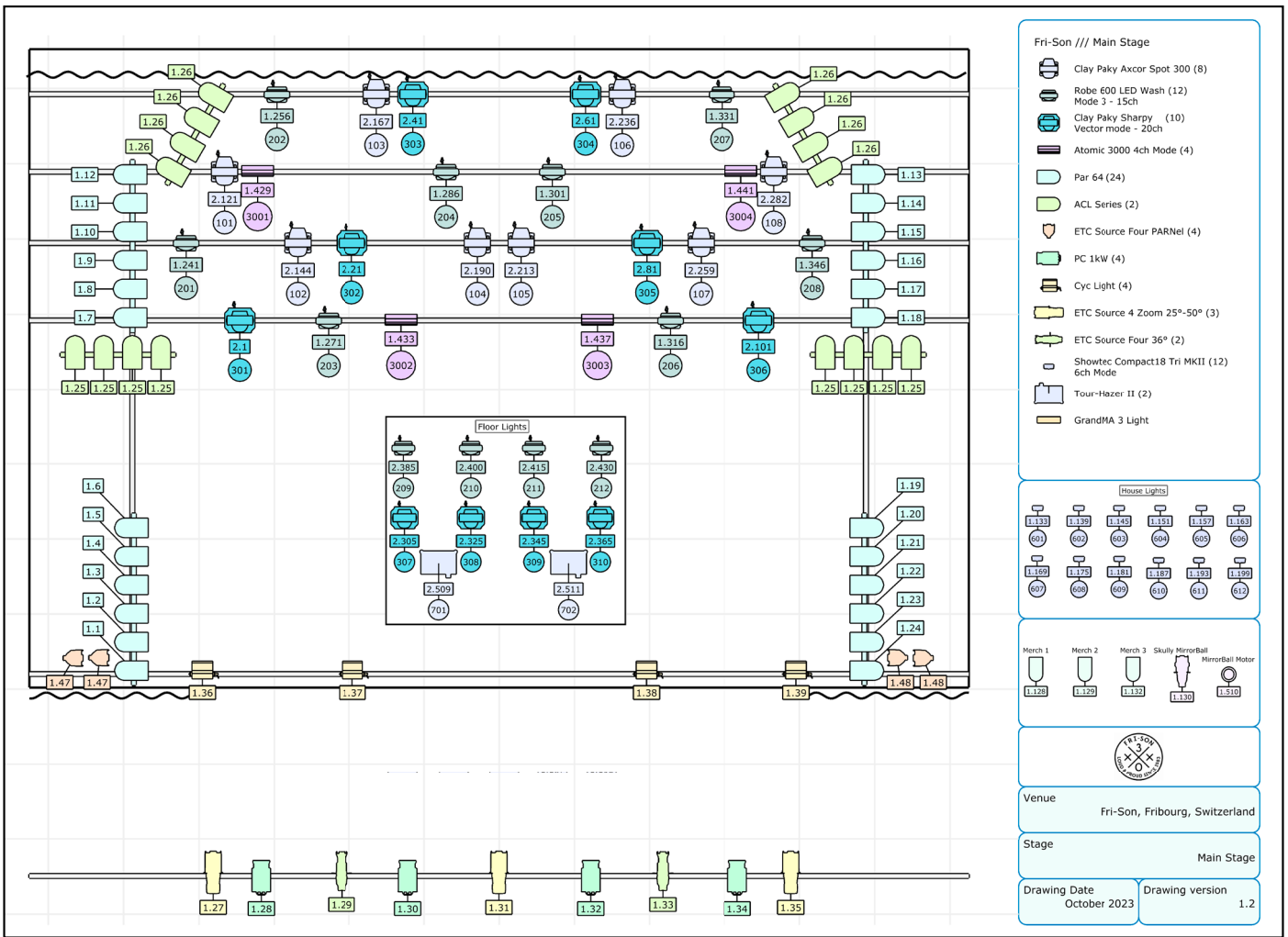
Please inform our lighting manager at the beginning of the advancing if you use laser radiation in classes 1M, 2M, 3R, 3B or 4. According to laser type, we need to hire a technician holding a certificate, which may entail additional costs.

### MISCELLANEOUS

Let us know at the beginning of the advancing if your show includes :

- Any fire and / or flame producing items, including fireworks and pyrotechnics
- Backdrops, curtains or decoration made of paper, card, cloth, plastic or any type of highly flammable material
- Items that need to be hung above the floor or stage
- Live transmissions
- Additional screens, video or projection material placed in the audience zone

# LIGHT PLOT



# PATCH

What	Fixture	How Much ?	Adresse	Mode
Dimmer 1 thru 24 Side	PAR Can	24	1.1 thru 1.24	2 Mode 0
ACL Front	ACL	1	1.25	2 Mode 0
ACL Back	ACL	1	1.26	2 Mode 0
Front Light	ETC Source 4 Zoom 25°-50°	3	1.27 + 1.31 + 1.35	2 Mode 0
Front Light	PC 1kW	4	1.28 + 1.30 + 1.32 + 1.34	2 Mode 0
Front Light	ETC Source 4 36°	2	1.29 + 1.33	2 Mode 0
Blinder	Cyc Light	4	1.36 thru 1.39	2 Mode 0
Front Side Light	ETC Source Four PARnel	4	1.47 + 1.48	2 Mode 0
Merch 1	PAR Can	1	1.128	2 Mode 0
Merch 2	PAR Can	1	1.129	2 Mode 0
Merch 3	PAR Can	1	1.132	2 Mode 0
Skully Mirror Ball	ETC Source 4 Zoom 25°-50°	1	1.130	2 Mode 0
MirrorBall Motor	MirrorBall Motor	1	1.510	1 Mode 0
House Light	3 Compact Par 18 Tri MKII	12	1.133 thru 1.199	Mode 4 6 Channel
Wash Up	Robin 600 LEDWash	8	1.241 thru 1.346	Mode 3
Wash Down	Robin 600 LEDWash	4	2.385 thru 2.430	Mode 3
Spots	Axxor spot 300	8	2.121 thru 2.282	Mode 0
Sharp Up	Sharp	6	2.001 thru 2.101	Vector lamp on
Sharp Down	Sharp	4	2.305 thru 2.365	Vector lamp on
Strobs	Atomic 3000	4	1.429 thru 1.441	4 channel
Hazer	Tour Hazer II	2	2.509 + 2.511	Mode 0

## WHAT TO DO IN FRIBOURG & AROUND

### SIGHTSEEING

---

<a href="#">Funiculaire</a>	Old funicular running between the lower and the upper town of Fribourg.
<a href="#">Motta swimming pool</a>	Outdoor pool from the twentieth century.
<a href="#">St Nicholas Cathedral</a>	Gothic cathedral in the middle of the medieval town.
<a href="#">Quartier du Bourg</a>	A beautiful neighbourhood leading you to the old town, surrounded by small stores.

### TAKE A STROLL

---

<a href="#">The Loreto Chapel</a>	Offers the most beautiful view of Fribourg's old town.
<a href="#">Lake Pérolles</a>	Really nice walk around the small lake of Pérolles.

### MUSEUMS

---

<a href="#">smem</a>	Swiss museum for electronic music instruments, one of the biggest collection of synthesizers.
<a href="#">Friart</a>	Contemporary art center in the lower town.
<a href="#">WallStreet</a>	Offspace in Fribourg promoting art & culture.
<a href="#">HR Giger Museum</a>	Dedicated to HR Giger, in the medieval town of Gruyères (20' from Fribourg by car).
<a href="#">Espace Jean Tinguely – Niki de Saint Phalle</a>	Jean Tinguely and Niki de Saint Phalle left their mark on 20th century art. Discover their works in dialogue and exciting temporary exhibitions !

### SPA

---

<a href="#">Urbanspa</a>	Spa in the center of the city. Let us know during advancing if you're interested in going, we can give you free access, subject to availability.
--------------------------	--

### RESTAURANTS & CAFÉ

---

<a href="#">Café du Gothard</a>	For a cheese fondue & other traditional meals
<a href="#">Le Cyclo</a>	Burgers
<a href="#">MenaMe' or Spizzi Pizza</a>	Pizzas
<a href="#">Punto Sud</a>	South American food
<a href="#">Les Menteurs</a>	Local and seasonal food
<a href="#">Le Belvédère</a>	Enjoy the wonderful view from their terrace

### MUSIC

---

<a href="#">Holy Guitars</a>	Useful in case of a broken guitar string ;-)
<a href="#">Ablette Records</a>	Record shop situated in our building ! Don't hesitate to pass by !

### **Fri-Son**

↳ was one of the first underground cultural venues to emerge in French-speaking Switzerland in the 80s.

↳ offers its stage and space to artists from a wide range of backgrounds.

↳ offers its audiences many forms of alternative music, as well as artistic expression of all kinds.

### **A QUICK HISTORY**

---

Fri-Son was born in 1983 out of the lack of self-managed cultural spaces in Switzerland. In some cities, these spaces were hard won under pressure from the streets. In Fribourg, the movement began with a series of exhibitions organized by Friart in the Grand Séminaire, a building that no longer exists.

These events were intended as a critical echo of the official celebrations marking the 500th anniversary of the canton of Fribourg's entry into the Swiss Confederation. From then on, and in just a few short years, the cultural landscape of Fribourg changed radically. The Belluard Festival and Friart, followed by the Fri-Son collective, established themselves as new cultural players in Switzerland and abroad.



© Tanja Matic 2023

↳ You may have already heard of Skully ? Our famous mascot ! Come and say hello !

### **THEY PLAYED AT FRI-SON**

---

Nirvana – Beastie Boys – Sonic Youth – Beck – Massive Attack – Marianne Faithful – John Cale – Foo Fighters – Kae Tempest – Queens Of The Stone Age – Morcheeba – Slayer – Metronomy – Sigur Rós – Muse – Gojira – Franz Ferdinand – Placebo – Stromae – Limp Bizkit – Korn – Editors – Air – Mando Diao – Yann Tiersen – Röyksopp – Interpol – Meshuggah – Christine & The Queens

& many many more



# ANNEXES

Main Stage



Main Stage (seated)





# ANNEXES

Green Room / Kitchen



Dressing Room 1



Dressing Room 2



Dressing Room 1



Dressing Room 2



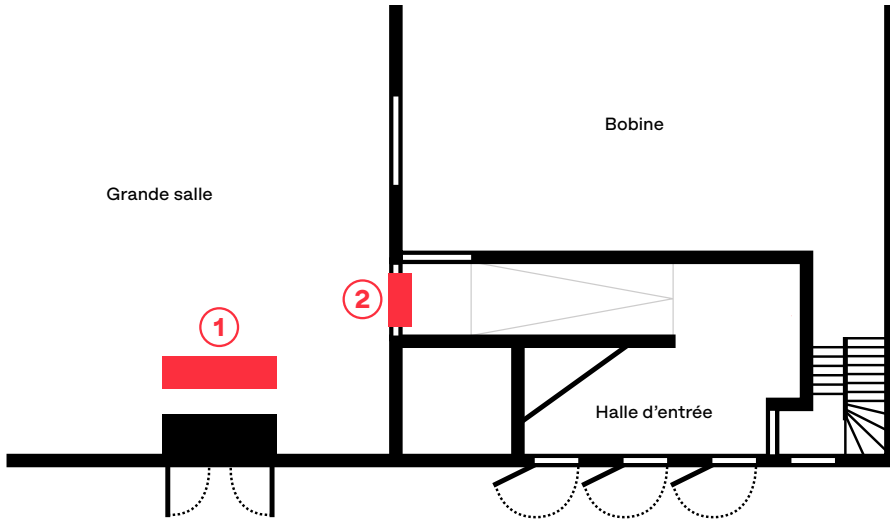
Production Office





# ANNEXES

## Merch stand positions



- 1. max. 4m long (for concerts on the Main Stage)
- 2. max. 2m long (for concerts in La Bobine)

## Parking

