



SINCE 1983 • ROUTE DE LA FONDERIE 13 • 1705 FRIBOURG • WWW-FRI-SON.CH

# **TECHNICAL RIDER**

## **MAIN STAGE**

**PLEASE NOTE THAT ACCORDING TO A STRICT SWISS LAW  
RESTRICTING THE LOUDNESS,  
NO BAND SHALL EXCEED  
LEQ60 100 DB(A)  
AND THE TOPS NEVER EXCEED THE LIMIT OF  
125 DB(A) AT ANY TIME.**

# SOUND

## PA

### **SPEAKERS**

12 x Adamson Y10  
2 x Adamson SpekTrix Wave downfill  
8 x Adamson SpekTrix subwoofers  
2 x Adamson E219 subwoofers

### **AMPLIFIERS**

5 x Lab Gruppen PLM10000Q  
1x Lab Gruppen PLM+ 20K44

## FOH

### **DESK**

1 x DIGICO SD8  
1 x MADI RACK (48 inputs / 8 analog outputs / 8 AES/EBU outputs)

### **PROCESSING**

Lake Controller

### **RECORDING**

1x DIGICO UB-MADI (32in/out)

### **INTERCOM & SHOUTBOX**

1 x Intercom line to monitor desk  
2 x Behringer Eurolive B205D

### **SOUND LEVEL METER**

1x 10eazy

## MONITORING

### **DESK**

1 x DIGICO SD8  
1 x MADI RACK (48 inputs / 16 analog outputs / 8 AES/EBU outputs)

**MONITORS**

12 x Martin LE700  
12 x Aux sends  
2 x Sidefills Turbosound TMS3 + Subs TSE218  
1 x Sub TSE218 for Drumfill

**AMPLIFIERS**

MC2 E100 & E475 + XTA DP448

**MICROPHONES & DI BOX****MICS**

1 x Shure beta 52	5 x Sennheiser e604
1 x Shure beta 91A	2 x Sennheiser BF504
1 x Shure beta 91	4 x Sennheiser e609
7 x Shure SM 57	2 x Sennheiser MD 421
7 x Shure SM 58	2 x Sennheiser e614
4 x Shure beta 57A	1 x Audix D6
2 x Shure beta 58	1 x Audix i5
2 x Shure SM58-S	2 x Audix ADX-51
2 x Shure KSM 27	1 x Electro Voice n/d 868
4 x Neumann KM184	4 x Electro Voice n/d 308b
1 x Beyerdynamic M88TG	

**DI**

12 x DI BSS AR 133  
2 x DI BSS AR 116  
1 x DI Radial proAV2

**DJ EQUIPMENT**

4 x Pioneer CDJ2000 NXS  
2 x Pioneer PLX1000  
2 x Technics MK5  
1 x Pioneer DJM900 NXS  
1 x Pioneer DJM800  
1x Allen&Heath Z14

## STAGES DIMMENSIONS

Depth	7.50m
Width	12.50m
Opening	8.00m
Height	1.20m
Clearance	4m

## HF FREQUENCIES

470 MHz to 789 MHz

## POWER SUPPLY

1 x 125A (CEE)  
1 x 63 A (CEE)  
1 x 32 A (CEE)  
6 x 16 A (CEE)

# LIGHT & VIDEO

## DESK

1 x MA Lighting GrandMA Ultralight  
1 x MA Lighting Light Commander II 48/6

## DIMMERS

2 x Rack RVE HDL/HDLX 48 x 2kW (Total : 96 Channels)

## PARS

4 x Lighting bar (6 PAR 64 1000W)  
30 x PAR 64 solo 1000W  
3 x ACL Series 250W  
6 x PC 1000W  
6 x Parnel Source Four 750W

## PROFILERS

4 x ETC Source Four Zoom 25° / 50° 750W  
8 x ETC Source Four 750W

**MOVING LIGHT**

12 x Robe 600 Led Wash  
12 x Clay Parky Sharpy  
9 x Martin MAC 250 Krypton

**BLINDERS**

4 x Inno / Lineo S1000 quartz 1000W  
8 x sunstrip active

**STROB**

4 x Martin Atomic 3000

**HAZER**

2 x Tour Hazer 2

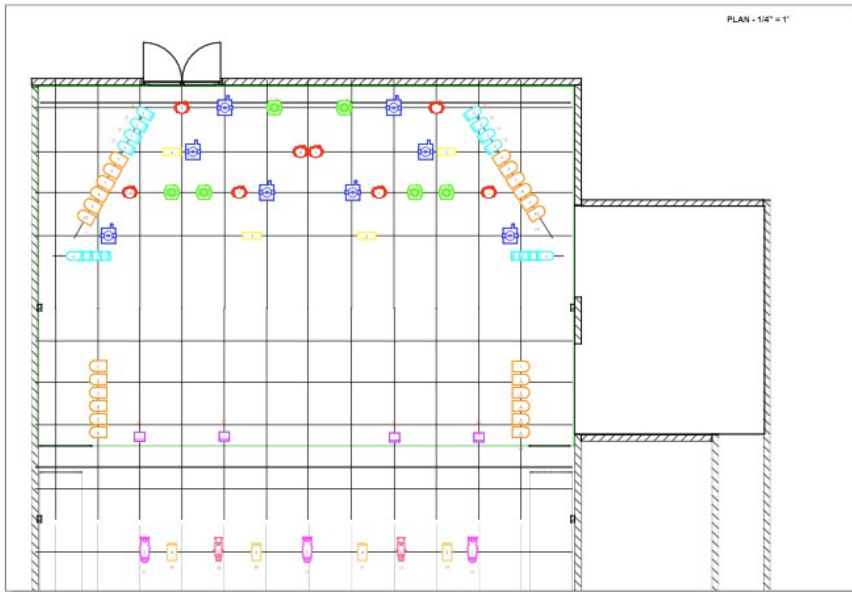
**POWER SUPPLY**

2 x 125A (CEE)  
2 x 63 A (CEE)  
5 x 32 A (CEE)  
4 x 16 A (CEE)

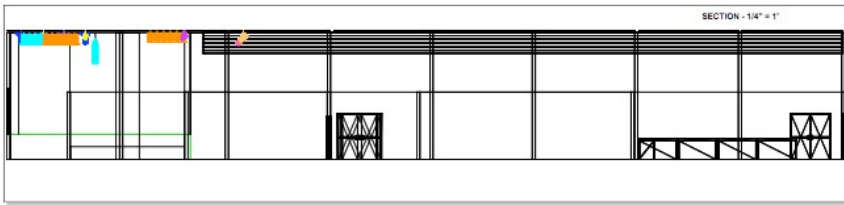
**VIDEO**

2 x Beamer Eiki LC-WUL100L HD  
2 x Screen PortaScreen 366X498 cm

# PLAN



Symbol	Name	Co
	Sharpys 20ch	6
	Robin LEDWash 600 mode 3 15ch	8
	Mac 250 Krypton 16-bit ext 17ch	8
	Atomic 3000 4 ch	4
	ACL pair	2
	PAR 64 ramp	4
	Upper Horizon (blinder)	4
	Source 4 - 25/50 Zoom	3
	Source 4 750	2
	Strand Lighting Cantata PC	4



not to scale

wysiwyz

FRI-SON  
FONDERIE 13  
CH-1700 FRIBOURG

